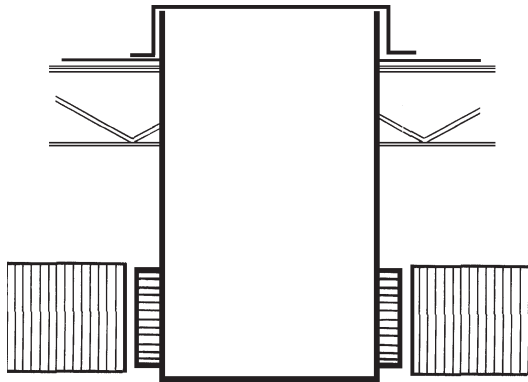




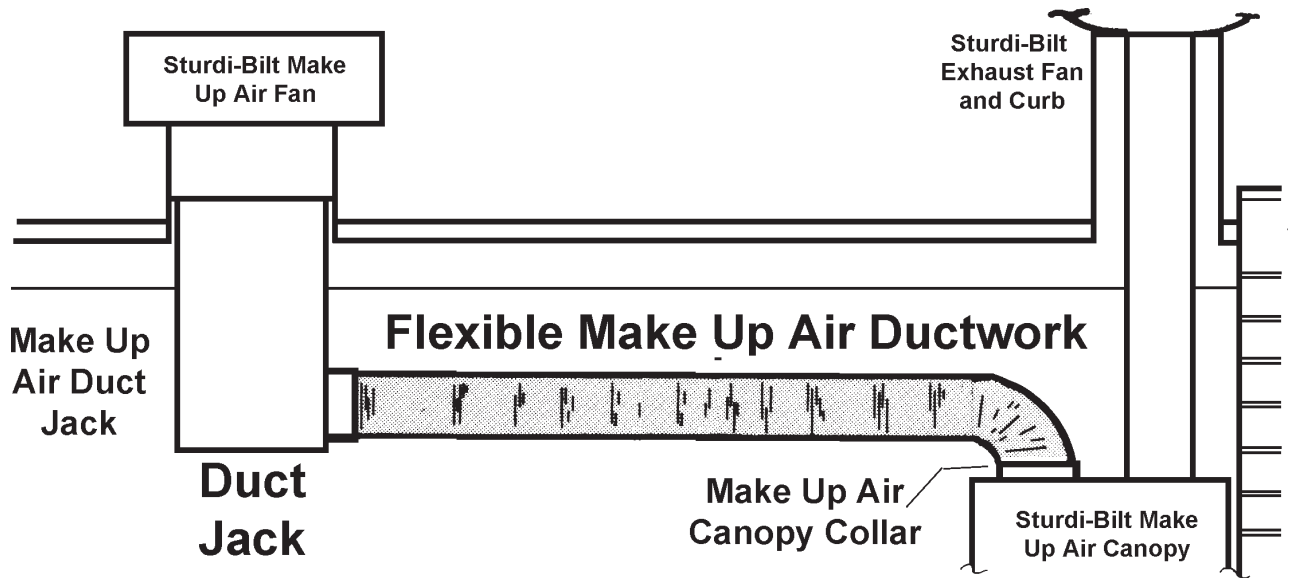
CANOPIES, UPDRAFTS, DUCTWORK, EXHAUST AND MAKE UP AIR FANS

# APPROVAL SHEET

## Make Up Air Ductwork



Job Name:			
Dealer:			
MUA Fan Model	# Ducts	Duct Model	CFM
P.O. #:	By:		Date:
<b>Fabrication cannot begin until</b>			<b>sheet is signed</b>
Approved by			Date



### Specifications

- DM Series Make Up Duct:** 12" Diameter by 15ft Long Flexible Expandable Metallic Uninsulated Make Up Air Duct, Round Collar(s) to be attached to the Make Up Air Canopy, and 42" High x 22 Gauge Aluminized Steel Duct Jack with Collar(s) for Make Up Air Duct
- "1" Length of Duct     "2" Length of Duct     "3" Length of Duct     "4" Length of Duct
- For "FME"     For "FMF"     For "FMS"     For "FMC"
- NFPA #96 Fire Dampers** UL Listed, Welded to the make up air Canopy
- Insulated Cover** for Make Up Air Duct