



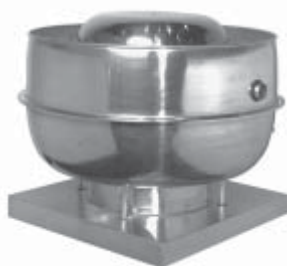
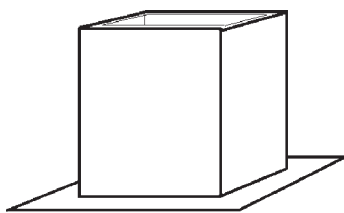
CANOPIES, UPDRAFTS, DUCTWORK, EXHAUST AND MAKE UP AIR FANS

APPROVAL SHEET



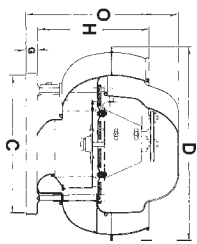
U. L. Grease Listed UPBLAST FANS

Belt Drive



DIMENSIONAL DATA

Models	C	H	D	O	G
F96-J	30"	25"	40"	29 1/4"	2"
F96-K	30"	25"	40"	29 1/4"	2"
F96-L	30"	25"	40"	30 1/4"	2"
F96-M	30"	25"	40"	30 1/4"	2"



Job Name:		
Dealer:		
Model	SP	CFM
P.O. #:	By:	Date:
Fabrication cannot begin until sheet is signed		
Approved by		Date

ENGINEERING INFORMATION

Model	HP	RPM	1/8"	1/4"	3/8"	1/2"	5/8"	3/4"	7/8"	1"	1 1/4"	1 1/2"
F96-J	1	1245-1165	4595-4284	4480-4162	4365-4038	4247-3911	4127-3776	3995-3598	3817-3394	3626-3190	3234-2651	2501
F96-K	1 1/2	1425-1310	5290-4846	5190-4738	5090-4628	4989-4517	4886-4405	4782-4287	4674-4150	4554-3970	4230-3608	3897-3194
F96-L	1 1/2	1250-1140	5888-5347	5764-5211	5640-5075	5515-4936	5388-4793	5257-4633	5115-4418	4930-4193	4519-3725	4090-2749
F96-M	2	1375-1290	6500-6084	6388-5965	6275-5844	6162-5723	6048-5600	5932-5475	5814-5344	5690-5189	5363-4793	4990-4390

Specifications

Certifications: Underwriters Laboratories (UL762) and UL listed for Canada (Power Ventilation for Restaurant Exhaust Appliances) AMCA Certified Ratings for Sound and Air Performance. **Description:** Spun Aluminum Upblast Centrifugal Roof Mounted Exhaust Ventilator. **Construction:** Bolt and Welded Construction, Spun Aluminum, quick release Latch Removal Top, External Wiring Compartment with Integral Conduit Chase to Motor Compartment, 14 gauge Steel Power Assembly, three pound density foil backed Heat Shield. **Wheel:** 100% Aluminum Centrifugal Backward included, Balanced to AMCA Standard 204-96. **Motor:** Heavy Duty, Permanently Lubricated Sealed Ball Bearing. **Bearings:** Heavy Duty re-greasable Ball type Bearings in a Cast Iron Housing, minimum L50 life in excess of 200,000 hours. **Belts and Drives:** Heat and Oil Resistant Belt, Variable Pitch Motor Drive, Cast Iron Pulleys sized for 150% of installed Motor Horsepower. **Disconnect Switch:** NEMA 3R Exterior Rain Tight Covered Safety Disconnect Switch, Prewired. **Curb:** Welded Steel Roof Curb with Mounting Flanges to give Fan 40" Discharge Height.

Options: (IMC 2003 and NFPA 2001 require hinged base and grease terminator)

- Hinged Base:** Aluminum Construction with Wire Hold Back, and Bolted hold down.
- Grease Terminator:** Plastic/Media Grease Filter to prevent grease on roof
- Vented Curb:** For Fans on Fire Rated Roof Ceiling Shafts
- Pitched Curb:** For Pitched Roofs
- Two Speed Fan:** Fan supplied with a two speed motor to allow lower CFM between meals