



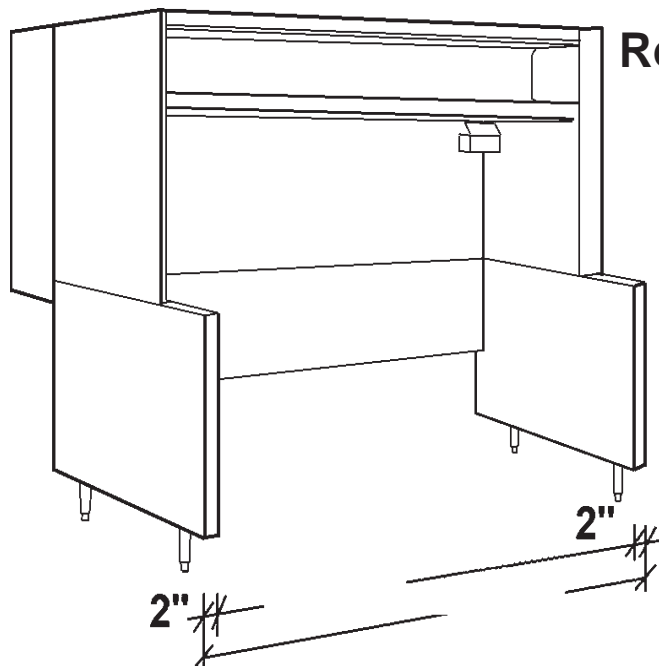
CANOPIES, UPDRAFTS, DUCTWORK, EXHAUST AND MAKE UP AIR FANS

# APPROVAL SHEET



Standard 2

## *Deluxe* Updraft Open Equipment Stands



Rear Untempered Make Up Air

Job Name:		
Dealer:		
P.O. #:	By:	Date:
<b>Fabrication cannot begin until sheet is signed</b>		
Approved by		Date



Options

### *Specifications*

**Updraft Superstructure:** Constructed of Stainless Steel on all exposed surfaces. Ventilation Section is Double Wall and constructed of 20 Gauge Stainless Steel and 18 Gauge Aluminized Steel. Walnut Woodgrain Trim. All Seams externally welded, Code #96 construction. Stainless Steel Covered Plate Shelf, Back Panel and Top Ends. Includes a full complement of 12" High x 20" wide U.L. Listed Aluminum Baffle Filters, pitched Grease Gutter, Grease Drain, and removable S/S Covered Grease cup. NSF Listed. Built to NFPA Standard #96, International Mechanical Code Type I Specifications for Low Side Wall Canopies.

**Updraft Equipment Base:** Double Wall Ends for easy cleaning. Interior Ends constructed of Stainless Steel. Stainless Steel Lower Rear Panel. Finished Painted Hammertone Gray Exterior Ends. Removable 6" High Legs with NSF adjustable Bullet Feet Flanged at Front.

☐ **Maple Cutting Board:** Laminated Hard Maple, 8" wide, mounted on Drop Leaf Brackets. Board easily removable for cleaning.

☐ **Stainless Steel Exterior Ends:** Supplied with Stainless Steel Exterior Base Ends.