



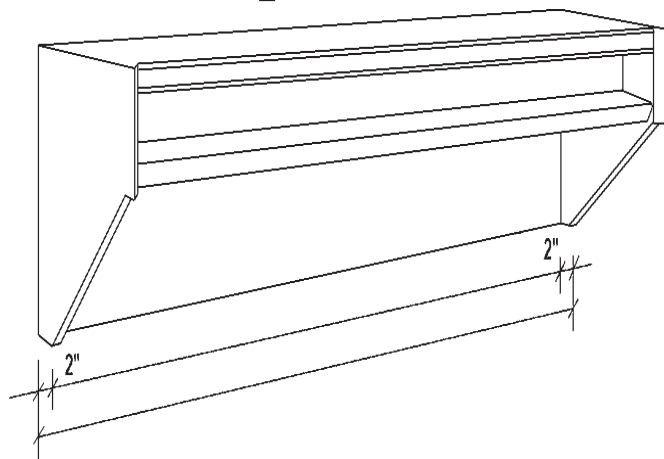
CANOPIES, UPDRAFTS, DUCTWORK, EXHAUST AND MAKE UP AIR FANS

APPROVAL SHEET



Standard 2

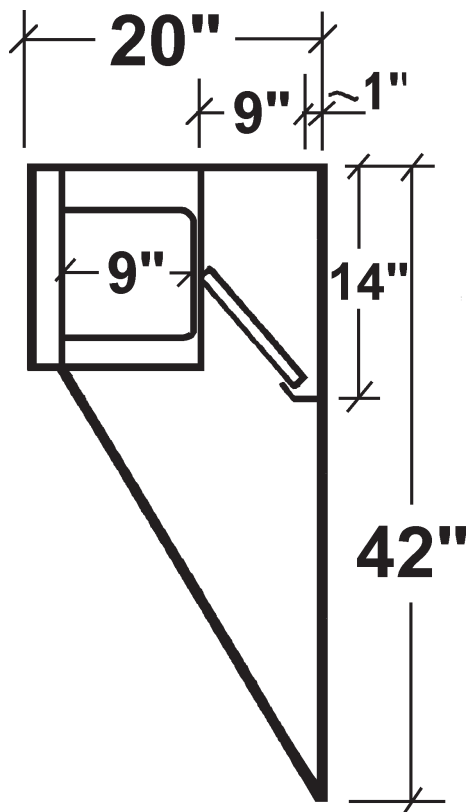
Deluxe Updraft Ventilator Top



Job Name:		
Dealer:		
Updraft Model	By:	Date:
Fabrication cannot begin until sheet is signed		
Approved by	PO Number	Date



Options



Specifications

Updraft Ventilator: Constructed of Stainless Steel on all exposed surfaces. Ventilation Section is Double Wall and constructed of 20 Gauge Stainless Steel and 18 Gauge Aluminized Steel. Walnut Woodgrain Trim. All Seams externally welded, Code #96 construction. Stainless Steel Covered Plate Shelf, Back Panel and Top Ends. Includes a full complement of 12" High x 20" wide U.L. Listed Aluminum Baffle Filters, pitched Grease Gutter, Grease Drain, and removable S/S Covered Grease cup. NSF Listed. Built to NFPA Standard #96, International Mechanical Code Type I Specifications for Low Side Wall Canopies.