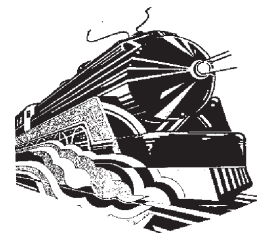




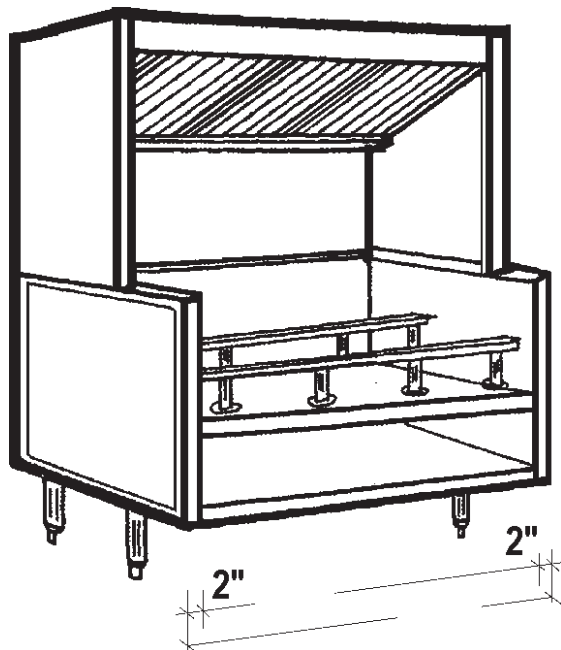
CANOPIES, UPDRAFTS, DUCTWORK, EXHAUST AND MAKE UP AIR FANS

APPROVAL SHEET



Economy Updraft

Front Untempered Make Up Air



Job Name:		
Dealer:		
Updraft Model	By:	Date:
Fabrication cannot begin until sheet is signed		
Approved by	PO Number	Date



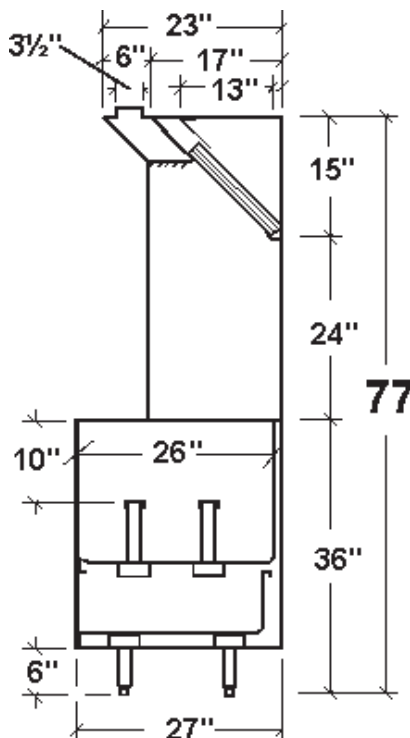
NFPA#96



Standard 2



Options



Specifications

- Updraft Superstructure:** Constructed of Stainless Steel on all exposed surfaces. Ventilation Section constructed of 20 Gauge Stainless Steel and 18 Gauge Aluminumized Steel. All Seams externally welded, Code #96 construction. S/S Front, Back Panel and Top Ends. Includes a full complement of 16" High x 20" wide U.L. Listed Aluminum Baffle Filters, pitched Grease Gutter, Grease Drain, and removable S/S Covered Grease cup. NSF Listed. Built to NFPA Standard #96, International Mechanical Code Type I Specifications for Low Side Wall Canopies.
- Updraft Equipment Base:** Double Wall Ends for easy cleaning. Interior Ends constructed of Stainless Steel. Stainless Steel Equipment and Undershelf. Equipment Rails to support counter style cooking equipment. Painted Exterior Ends.
- Make Up Air:** Make Up Air introduced through Grills on front Lip of Top Section, front is insulated. Full length precut Make Up Air Collar.
- ☐ **Aluminized Steel Model:** Same as above only Interior Ends and Undershelf Aluminumized Steel.
- ☐ **Maple Cutting Board:** Laminated Hard Maple, 8" wide, mounted on Stainless Steel brackets. Board easily removable for cleaning.
- ☐ **Stainless Steel Exterior Ends:** supplied with Stainless Steel Exterior Base Ends.