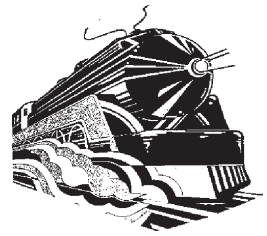




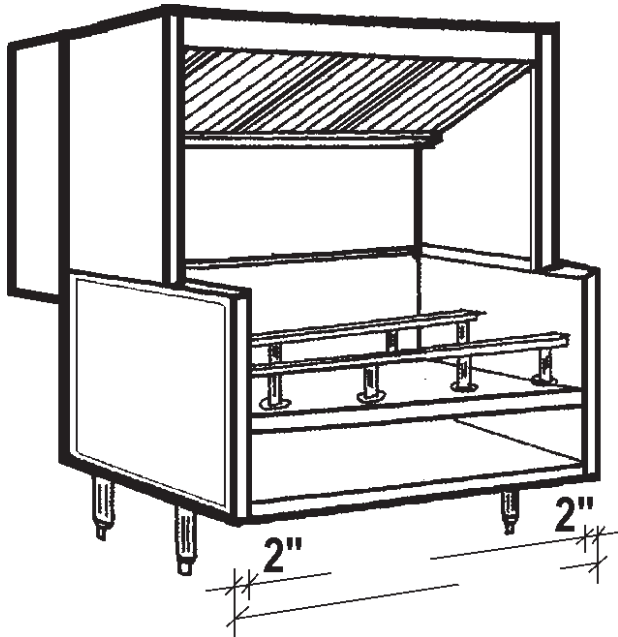
CANOPIES, UPDRAFTS, DUCTWORK, EXHAUST AND MAKE UP AIR FANS

APPROVAL SHEET



Economy Updraft

Front & Rear
Untempered Make Up Air



Job Name:		
Dealer:		
Updraft Model	By:	Date:
Fabrication cannot begin until sheet is signed		
Approved by	PO Number	Date



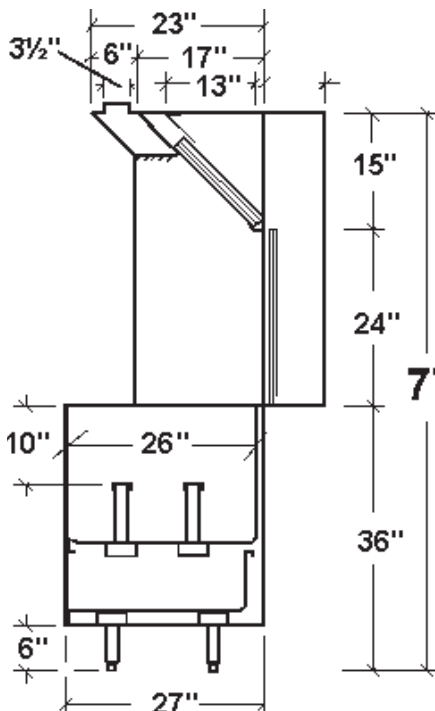
NFPA#96



Standard 2



Options



Specifications

Updraft Superstructure: Constructed of Stainless Steel on all exposed surfaces. Ventilation Section constructed of 20 Gauge Stainless Steel and 18 Gauge Aluminized Steel. All Seams externally welded, Code #96 construction. S/S Front, Back Panel and Top Ends. Includes a full complement of 16" High x 20" wide U.L. Listed Aluminum Baffle Filters, pitched Grease Gutter, Grease Drain, and removable S/S Covered Grease cup. NSF Listed. Built to NFPA Standard #96, International Mechanical Code Type I Specifications for Low Side Wall Canopies.

Updraft Equipment Base: Double Wall Ends for easy cleaning.

Interior Ends constructed of Stainless Steel. Stainless Steel Stainless Steel Equipment and Undershef. Equipment Rails to support counter style cooking equipment. Painted Exterior Ends.

Make Up Air: Make Up Air introduced in two places, under the front top thur grills, (Front is insulated) and in rear of Updraft in a insulated S/S Where Shows distrubution plenum. Full Length front Make Up Air Collar.

☐ **Aluminized Steel Model:** Same as above only Interior Ends and Undershef Aluminiaed Steel.

☐ **Maple Cutting Board:** Laminated Hard Maple, 8" wide, mounted on Stainless Steel brackets. Board easily removable for cleaning.

☐ **Stainless Steel Exterior Ends:** supplied with Stainless Steel Exterior Base Ends.