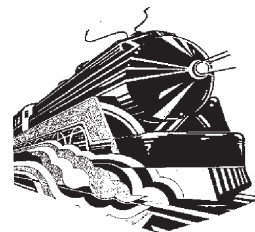


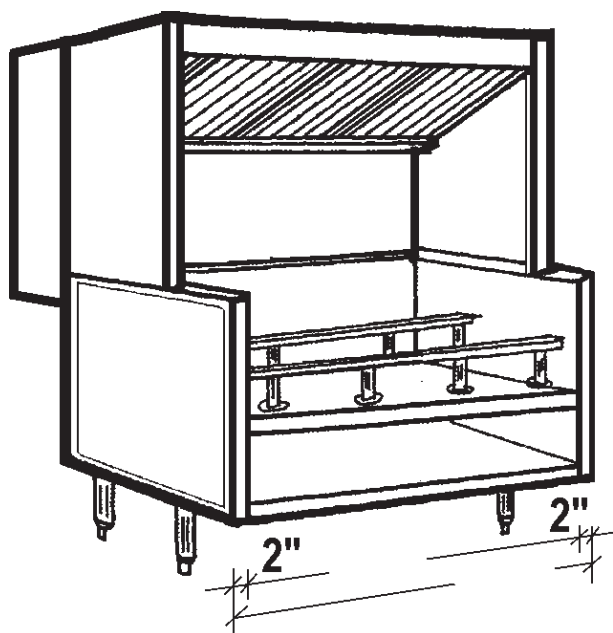


# APPROVAL SHEET



## Economy Updraft

Rear Tempered Make Up Air



|   |           |       |
|---|-----------|-------|
| Job Name:   |           |       |
| Dealer:   |           |       |
| Updraft Model   | By:       | Date: |
| <b>Fabrication cannot begin until sheet is signed</b> |           |       |
| Approved by   | PO Number | Date  |

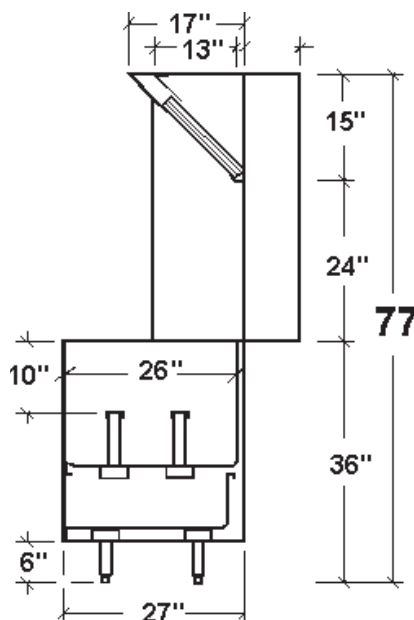


## Options

Standard 2

Listed.

UL/CSA: UL 710 Labeled and



## Specifications

- **Updraft Superstructure:** Constructed of Stainless Steel on all exposed surfaces. Ventilation Section constructed of 20 Gauge Stainless Steel and 18 Gauge Aluminized Steel. All Seams externally welded, Code #96 construction. S/ S Front, Back Panel and Top Ends. Includes a full complement of 16" High x 20" wide U.L. Listed Aluminum Baffle Filters, pitched Grease Gutter, Grease Drain, and removable S/S Covered Grease cup. NSF Listed. Built to NFPA Standard #96, International Mechanical Code Type I Specifications for Low Side Wall Canopies.
- **Updraft Equipment Base:** Double Wall Ends for easy cleaning. Interior Ends constructed of Stainless Steel. Stainless Steel Stainless Steel Equipment and Undershelf. Equipment Rails to support counter style cooking equipment. Painted Exterior Ends.
- **Make Up Air:** Tempered Make Up Air introduced behind Updraft in air distribution plenum.
- ☐ **Aluminized Steel Model:** Same as above only Interior Ends and Undershelf Aluminiaed Steel.
- ☐ **Maple Cutting Board:** Laminated Hard Maple, 8" wide, mounted on Stainless Steel brackets. Board easily removable for cleaning.
- ☐ **Stainless Steel Exterior Ends:** supplied with Stainless Steel Exterior Base Ends.