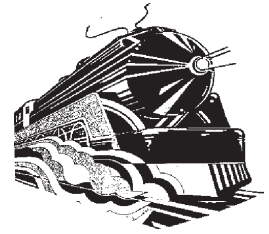


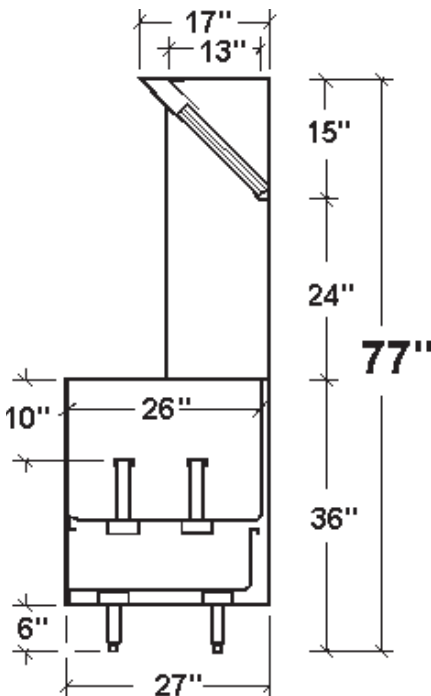
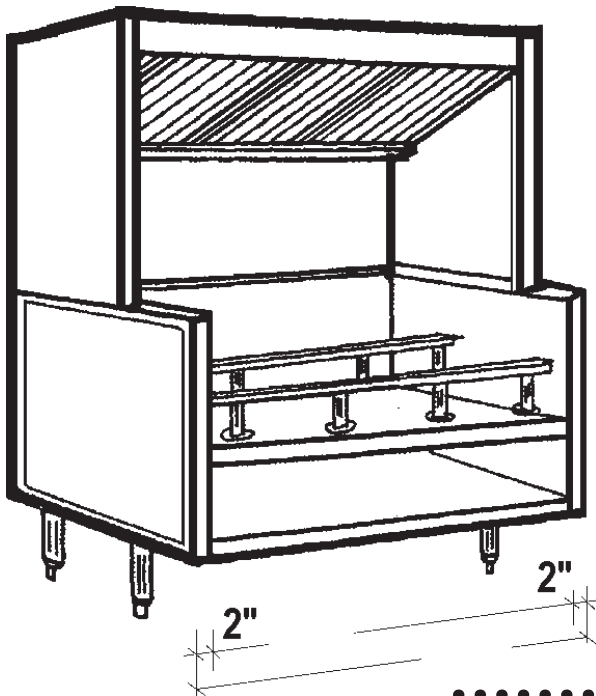


CANOPIES, UPDRAFTS, DUCTWORK, EXHAUST AND MAKE UP AIR FANS

# APPROVAL SHEET



## Economy Updraft



Job Name:		
Dealer:		
Updraft Model	By:	Date:
<b>Fabrication cannot begin until sheet is signed</b>		
Approved by	PO Number	Date



Standard 2

### Options

### Specifications

**Updraft Superstructure:** Constructed of Stainless Steel on all exposed surfaces. Ventilation Section constructed of 20 Gauge Stainless Steel and 18 Gauge Aluminized Steel. All Seams externally welded, Code #96 construction. S/S Front, Back Panel and Top Ends. Includes a full complement of 16" High x 20" wide U.L. Listed Aluminum Baffle Filters, pitched Grease Gutter, Grease Drain, and removable S/S Covered Grease cup. NSF Listed. Built to NFPA Standard #96, International Mechanical Code Type I Specifications for Low Side Wall Canopies.

**Updraft Equipment Base:** Double Wall Ends for easy cleaning. Interior Ends constructed of Stainless Steel. Stainless Steel Equipment and Undershelf. Equipment Rails to support counter style cooking equipment. Painted Exterior Ends

☐ **Aluminized Steel Model:** Same as above only Interior Ends and Undershelf Aluminized Steel.

☐ **Maple Cutting Board:** Laminated Hard Maple, 8" wide, mounted on Stainless Steel brackets. Board easily removable for cleaning.

☐ **Stainless Steel Exterior Ends:** supplied with Stainless Steel Exterior Base Ends.

☐ **UL/CSA:** UL 710 and CSA 22.2 Labeled and Listed.



UL 710