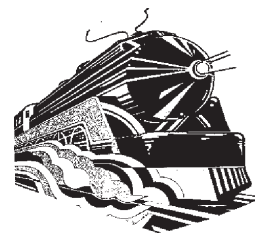


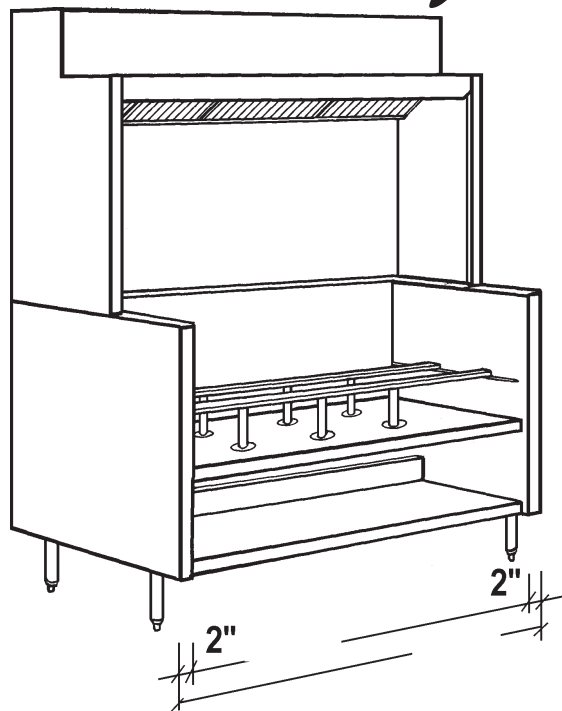


CANOPIES, UPDRAFTS, DUCTWORK, EXHAUST AND MAKE UP AIR FANS

APPROVAL SHEET



Economy Plate Shelf Updraft



Front Untempered Make Up Air

Job Name:		
Dealer:		
Updraft Model	By:	Date:
Fabrication cannot begin until sheet is signed		
Approved by	PO Number	Date



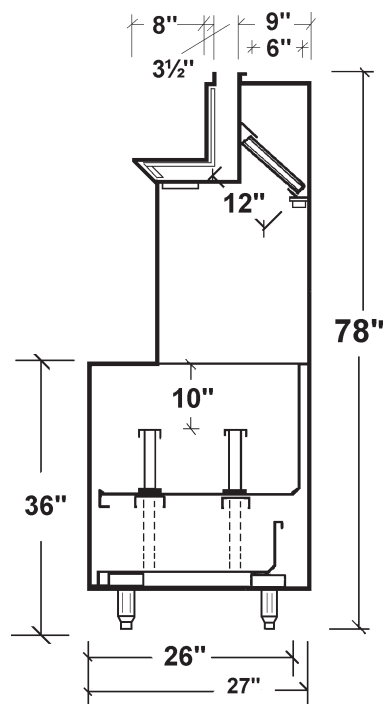
NFPA#96



Standard 2



Options



Specifications

- **Updraft Superstructure:** constructed of Stainless Steel on all exposed surfaces.
- Ventilation Section constructed of 20 Gauge Stainless Steel and 18 Gauge Aluminized Steel.
- All seams externally welded, Code #96 construction. Stainless Steel Plate Shelf, Back Panel and Top Ends. Includes a full complement of 20" wide U.L. Listed Aluminum Baffle Filters, pitched grease gutter, grease drain, and removable S/S covered grease cup. NSF Listed. Built to NFPA, Michigan, International Mechanical Code Specifications for Low Side Wall Hoods.
- **Updraft Equipment Base:** Double wall ends for easy cleaning. Interior Ends constructed of Stainless Steel. Finished Painted Hammertone Gray Exterior Ends. Stainless Steel Equipment Shelf, reinforced with aluminized steel channels. Stainless Steel Undershelf, adjustable NSF legs, and removable Equipment Rails for standard weight counter cooking equipment. NSF Listed.
- **Make Up Air:** Make Up Air introduced through Grills on front Lip of Plate Shelf on Top Section, plate shelf is insulated. Full Length Make Up Air Collar.
- ☐ **Aluminized Steel Model:** constructed the same as above, only with Aluminized Steel Interior Base Ends, and Aluminized Steel Undershelf.
- ☐ **Maple Cutting Board:** Laminated Hard Maple, 8" wide, mounted on Stainless Steel brackets. Board easily removable for cleaning.
- ☐ **Stainless Steel Ends:** supplied with Left &/or Rite S/S Exterior Base Ends.