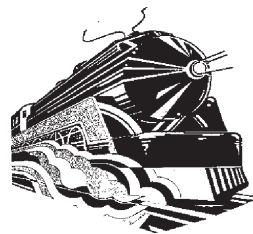




CANOPIES, UPDRAFTS, DUCTWORK, EXHAUST AND MAKE UP AIR FANS

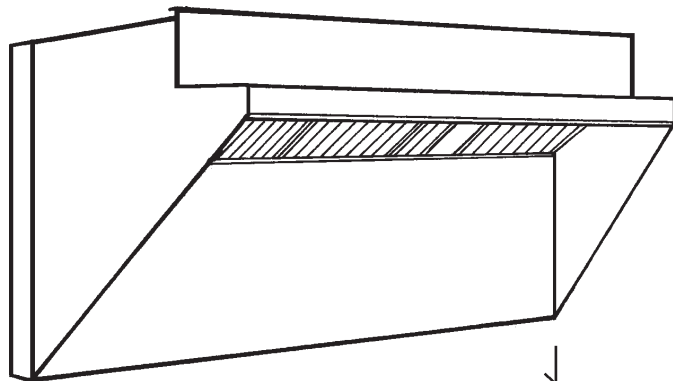
# APPROVAL SHEET



*Economy*

## 24" Wide Low Side Wall Hood

Rear 3" NFPA #96 Air Space



Job Name:

Dealer:

Updraft Model

By:

Date:

**Fabrication cannot begin until sheet is signed**

Approved by

PO Number

Date

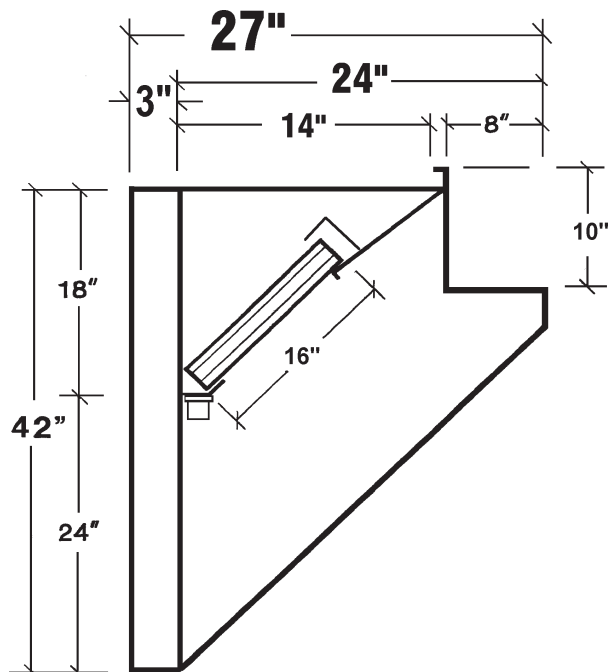
### Options



**NFPA#96**



Standard 2



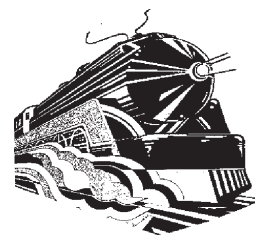
### Specifications

- ☐ **LSW73"S" Series:** 24" Wide Stainless Steel Model constructed of 20 gauge Stainless Steel where shows. Exhaust Section 18 gauge seamless Code #96 welded construction. 16" high Aluminum U.L. Listed Baffle Filters. Pitched grease trough to removable covered Stainless Steel grease cup. Complete with hangerstrap and instructions. NSF Listed, built to NFPA Code #96 and International Mechanical Code requirements for Type I Low Side Wall Hoods.
- ☐ **3" NFPA Airspace:** Allows Updraft to be placed 3" from drywall on steel studs per NFPA#96.
- ☐ **LSW73"A" Series:** Painted Model: Same as above except exposed exterior constructed of 18 gauge Aluminumized coated Steel, exterior painted hammertone gray where shows.



CANOPIES, UPDRAFTS, DUCTWORK, EXHAUST AND MAKE UP AIR FANS

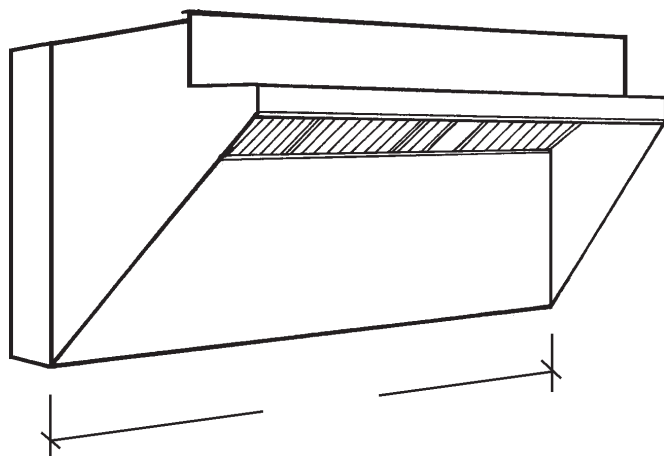
# APPROVAL SHEET



*Economy*

## 24" Wide Low Side Wall Hood

Rear Tempered Make Up Air



Job Name:

Dealer:

Updraft Model

By:

Date:

**Fabrication cannot begin until sheet is signed**

Approved by

PO Number

Date

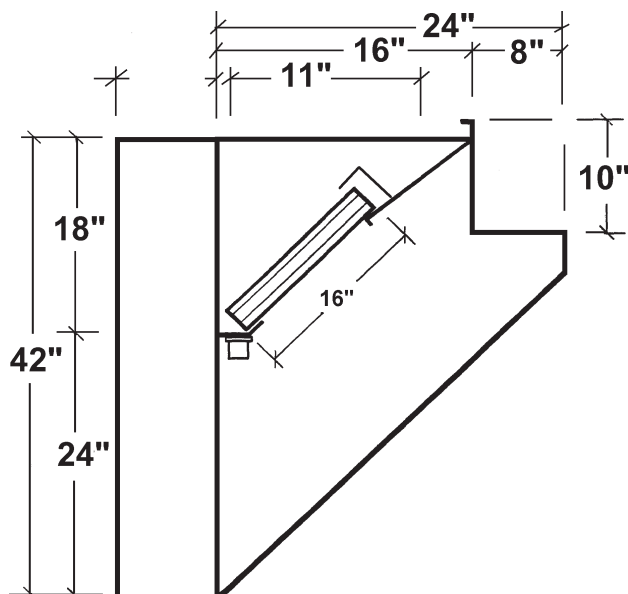
### Options



NFPA#96



Standard 2



### Specifications

**LSW73"S" Series:** 24" Wide Stainless Steel Model constructed of 20 gauge Stainless Steel where shown. Exhaust Section 18 gauge seamless Code #96 welded construction. Rear Section designed for tempered make up air discharge 16" high Aluminum U.L. Listed Baffle Filters. Pitched grease trough to removable covered Stainless Steel grease cup. Complete with hanger strap and instructions. NSF Listed, built to NFPA Code #96 and International Mechanical Code requirements for Type I Low Side Wall Hoods.

**Make Up Air:** Tempered Make Up Air introduced behind Ventilator in rear air distribution plenum.

☐ **LSW73"A" Series:** Painted Model: Same as above except exposed exterior constructed of 18 gauge Aluminized coated Steel painted hammertone gray

8132 Puritan Avenue, Detroit, Michigan, 48238, Phone Toll Free - 1-800-521-2895, Fax Toll Free 1-800-444-2895



Can  
CSA