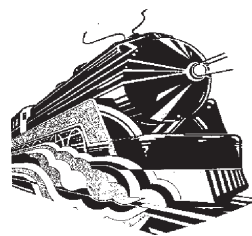




CANOPIES, UPDRAFTS, DUCTWORK, EXHAUST AND MAKE UP AIR FANS

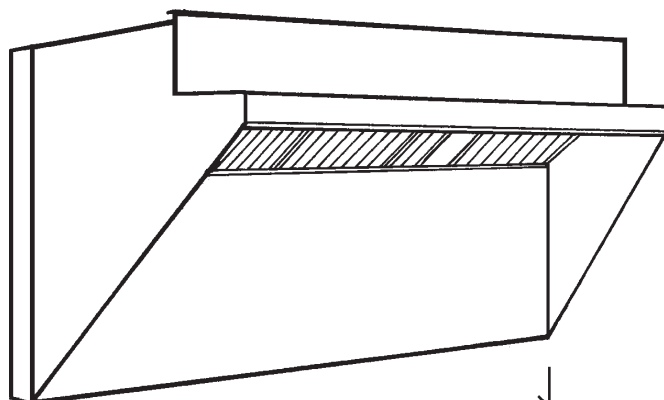
# APPROVAL SHEET



*Economy*

## 30" Wide Low Side Wall Hood

**With NFPA 3" Air Space**



Job Name:

Dealer:

Updraft Model

By:

Date:

**Fabrication cannot begin until sheet is signed**

Approved by

PO Number

Date

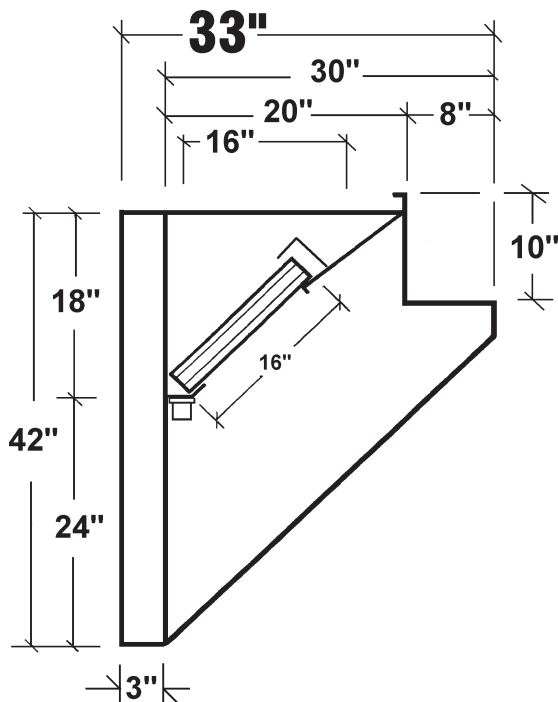
### Options



**NFPA#96**



Standard 2



### Specifications

☐ **LSW96"S" Series:** 30" Wide Stainless Steel Model: Constructed of 20 gauge Stainless Steel where shows. Exhaust Section 18 gauge seamless Code #96 welded construction. 16" high Aluminum U.L. Listed Baffle Filters. Pitched grease trough to removable covered Stainless Steel grease cup. Complete with hangerstrap and instructions. NSF Listed, built to NFPA Code #96 and International Mechanical Code requirements for Type I Low Side Wall Hoods.

☐ **3" NFPA Airspace:** Allows Updraft to be placed 3" from drywall on steel studs per NFPA#96.

☐ **LSW96"A" Series:** Painted Model: Same as above except exposed exterior constructed of 18 gauge Aluminized coated Steel, exterior painted hammertone gray where shows

☐ **UL 710 and Canada CSA C22.2 No 113**

Exhaust Hood Recognized



**Can  
CSA  
C22.2**



**UL 710**