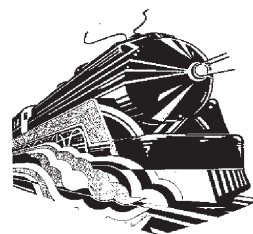




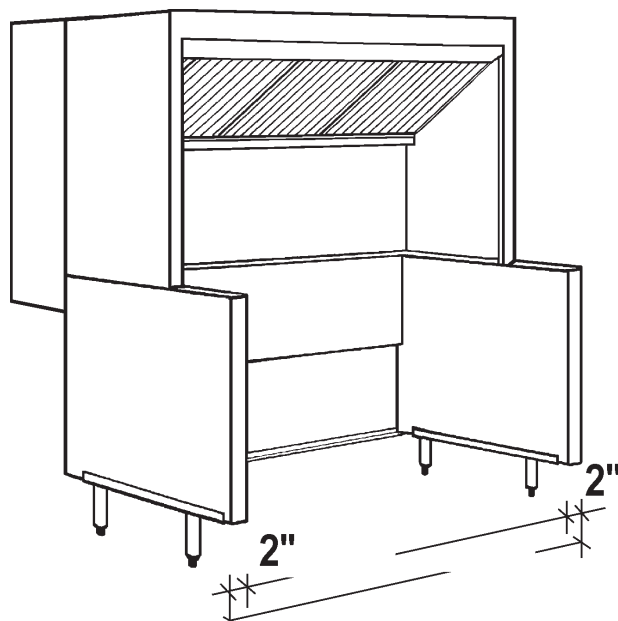
CANOPIES, UPDRAFTS, DUCTWORK, EXHAUST AND MAKE UP AIR FANS

# APPROVAL SHEET



## Economy Open Updraft

Front & Rear  
Untempered Make Up Air



Job Name:

Dealer:

Updraft Model

By:

Date:

**Fabrication cannot begin until sheet is signed**

Approved by

PO Number

Date



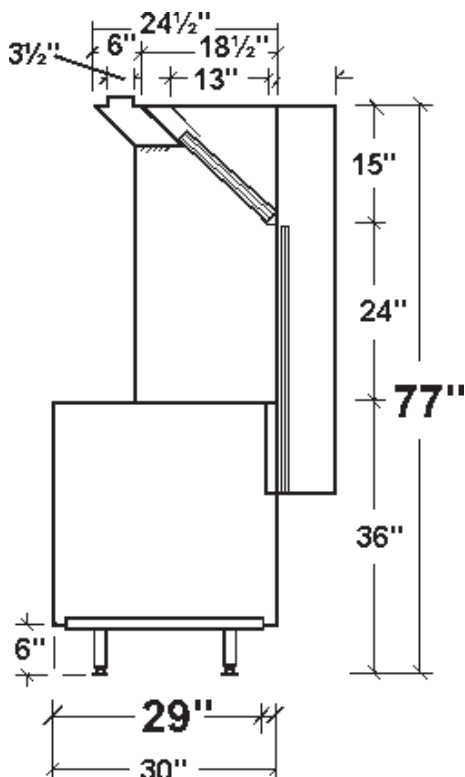
NFPA#96



Standard 2



Options



### Specifications

- **Updraft Superstructure:** Constructed of Stainless Steel on all exposed surfaces. Ventilation Section constructed of 20 Gauge Stainless Steel and 18 Gauge Aluminized Steel. All Seams externally welded, Code #96 construction. Stainless Steel Front, Back Panel and Top Ends. Includes a full complement of 16" High x 20" wide U.L. Listed Aluminum Baffle Filters, pitched Grease Gutter, Grease Drain, and removable S/S Covered Grease cup. NSF Listed. Built to NFPA Standard #96, International Mechanical Code Type I Specifications for Low Side Wall Canopies.
- **Updraft Equipment Base:** Double Wall Ends for easy cleaning. Interior Ends constructed of Stainless Steel. Stainless Steel Lower Rear Panel. Finished Painted Hammertone Gray Exterior Ends. Removable 6" High Legs with NSF adjustable Bullet Feet Flanged at Front.
- **Make Up Air:** Make Up Air introduced in two places, under the Front thur grills, (Front is insulated) and in rear of Updraft in a insulated S/S Where Shows distrubution Plenum.
- ☐ **Aluminized Steel Model:** Same as above only Interior Ends and Lower Rear Panel Aluminiaed Steel.
- ☐ **Maple Cutting Board:** Laminated Hard Maple, 8" wide, mounted on Stainless Steel brackets. Board easily removable for cleaning.
- ☐ **Stainless Steel Exterior Ends:** supplied with Stainless Steel Exterior Base Ends.