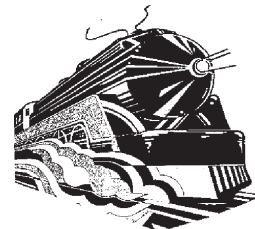




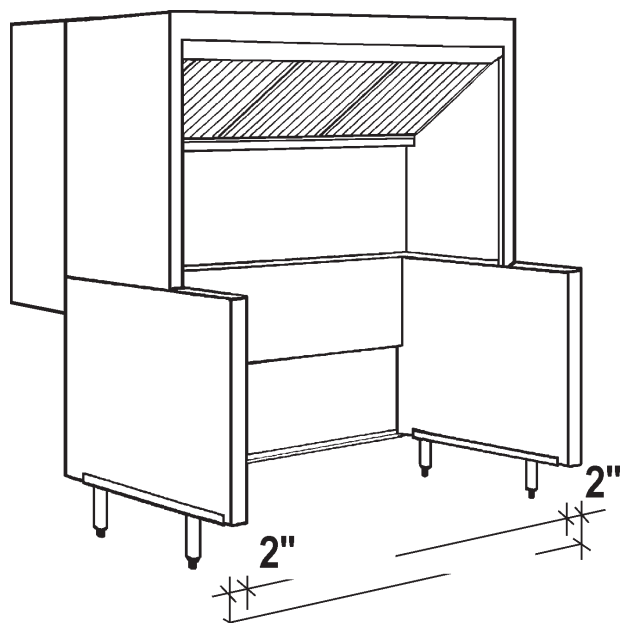
CANOPIES, UPDRAFTS, DUCTWORK, EXHAUST AND MAKE UP AIR FANS

APPROVAL SHEET



Economy Open Updraft

Rear Untempered Make Up Air



Job Name:		
Dealer:		
Updraft Model	By:	Date:
Fabrication cannot begin until sheet is signed		
Approved by	PO Number	Date



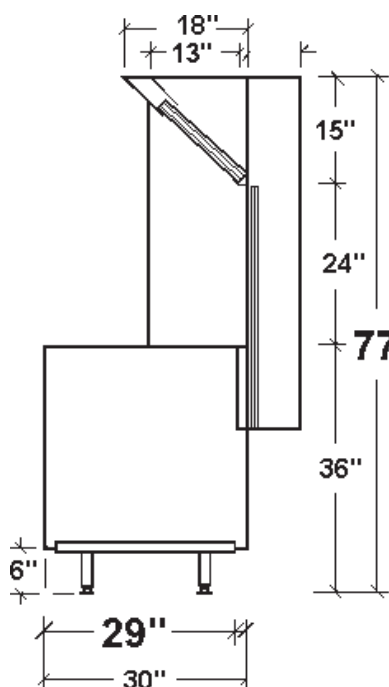
NFPA#96



Standard 2



Options



Specifications

- Updraft Superstructure:** Constructed of Stainless Steel on all exposed surfaces. Ventilation Section constructed of 20 Gauge Stainless Steel and 18 Gauge Aluminized Steel. All Seams externally welded, Code #96 construction.
- Heavy Gauge Stainless Steel Plate Shelf, Back Panel and Top Ends. Includes a full complement of 16" High x 20" wide U.L. Listed Aluminum Baffle Filters, pitched Grease Gutter, Grease Drain, and removable S/S Covered Grease cup. NSF Listed.
- Built to NFPA Standard #96, International Mechanical Code Type I Specifications for Low Side Wall Canopies.
- Updraft Equipment Base:** Double Wall Ends for easy cleaning. Interior Ends constructed of Stainless Steel. Stainless Steel Lower Rear Panel. Finished Painted Hammertone Gray Exterior Ends. Removable 6" High Legs with NSF adjustable Bullet Feet Flanged at Front.
- Make Up Air:** Untempered Make Up Air introduced behind Updraft in insulated air distribution plenum
- NFPA 3" Air Space:** 20 Gauge S/S Rear Air Space to allow Updraft to be installed 3" from drywall on steel studs only. Also available on left and right ends.
- Aluminized Steel Model:** Same as above only Interior Ends and Lower Rear Panel Aluminized Steel.
- Maple Cutting Board:** Laminated Hard Maple, 8" wide, mounted on Stainless Steel brackets. Board easily removable for cleaning.
- Stainless Steel Exterior Ends:** supplied with Stainless Steel Exterior Base Ends.