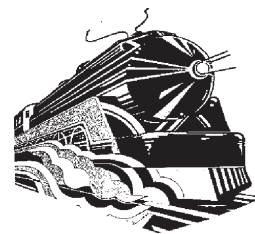




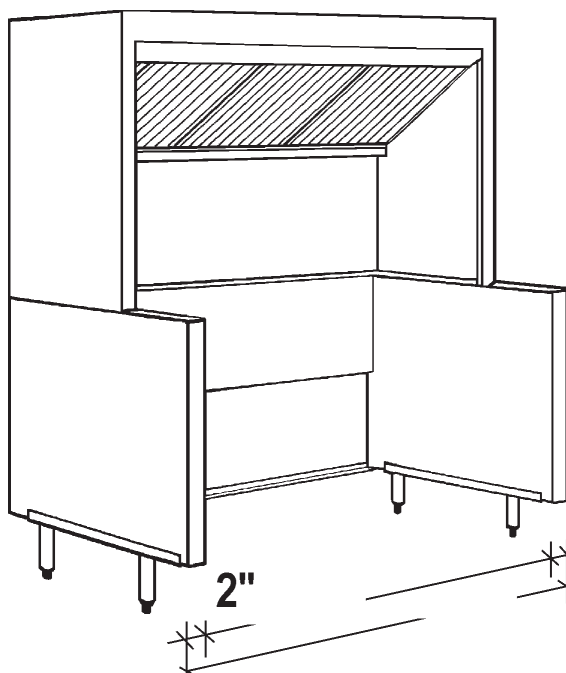
CANOPIES, UPDRAFTS, DUCTWORK, EXHAUST AND MAKE UP AIR FANS

# APPROVAL SHEET



## Economy Open Updraft

### Front Untempered Make Up Air

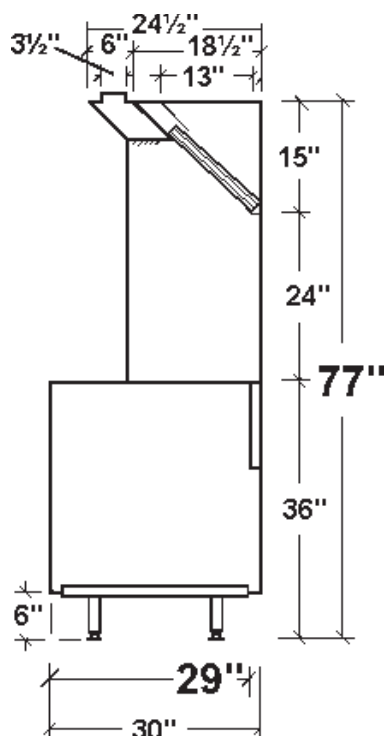


Job Name:		
Dealer:		
Updraft Model	By:	Date:
<b>Fabrication cannot begin until sheet is signed</b>		
Approved by	PO Number	Date



Standard 2

### Options



### Specifications

- Updraft Superstructure:** Constructed of Stainless Steel on all exposed surfaces. Ventilation Section constructed of 20 Gauge Stainless Steel and 18 Gauge Aluminumized Steel. All Seams externally welded, Code #96 construction. Stainless Steel Front, Back Panel and Top Ends. Includes a full complement of 16" High x 20" wide U.L. Listed Aluminum Baffle Filters, pitched Grease Gutter, Grease Drain, and removable S/S Covered Grease cup. NSF Listed. Built to NFPA Standard #96, International Mechanical Code Type I Specifications for Low Side Wall Canopies.
- Updraft Equipment Base:** Double Wall Ends for easy cleaning. Interior Ends constructed of Stainless Steel. Stainless Steel Lower Rear Panel. Finished Painted Hammertone Gray Exterior Ends. Removable 6" High Legs with NSF adjustable Bullet Feet Flanged at Front.
- Make Up Air:** Make Up Air introduced through Grills on below Front. Front is insulated. Full Length PreCut Make Up Air Collar.
- ☐ **Aluminized Steel Model:** Same as above only Interior Ends and Lower Rear Panel Aluminaed Steel.
- ☐ **Maple Cutting Board:** Laminated Hard Maple, 8" wide, mounted on Stainless Steel brackets. Board easily removable for cleaning.
- ☐ **Stainless Steel Exterior Ends:** supplied with Stainless Steel Exterior Base Ends.