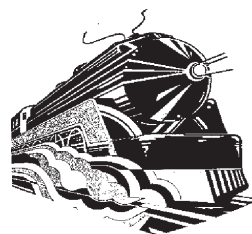




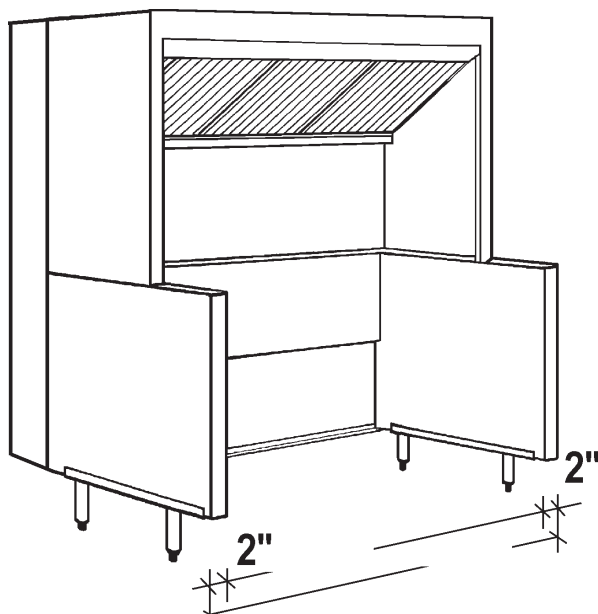
CANOPIES, UPDRAFTS, DUCTWORK, EXHAUST AND MAKE UP AIR FANS

APPROVAL SHEET



Economy Open Updraft

Front Untempered Make Up Air
NFPA #96 3" Airspace



Job Name:

Dealer:

Updraft Model

By:

Date:

Fabrication cannot begin until sheet is signed

Approved by

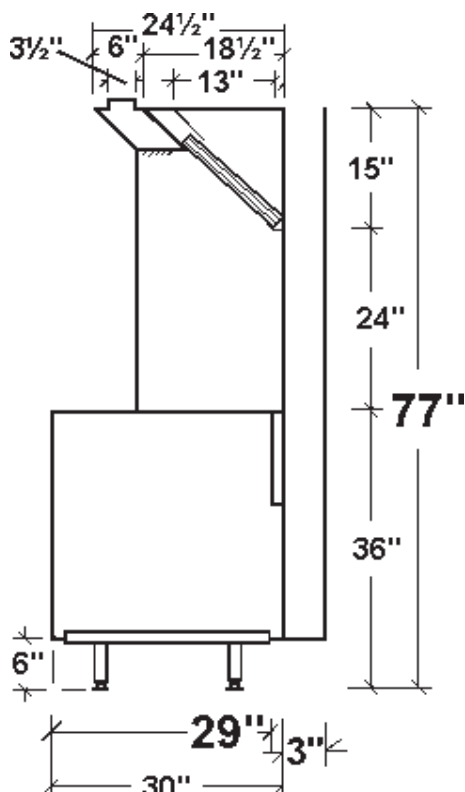
PO Number

Date



Standard 2

Options



Specifications

Updraft Superstructure: Constructed of Stainless Steel on all exposed surfaces. Ventilation Section constructed of 20 Gauge Stainless Steel and 18 Gauge Aluminumized Steel. All Seams externally welded. Code #96 construction. Stainless Steel Front, Back Panel and Top Ends. Includes a full complement of 16" High x 20" wide U.L. Listed Aluminum Baffle Filters, pitched Grease Gutter, Grease Drain, and removable S/S Covered Grease cup. NSF Listed. Built to NFPA Standard #96, International Mechanical Code Type I Specifications for Low Side Wall Canopies.

Updraft Equipment Base: Double Wall Ends for easy cleaning. Interior Ends constructed of Stainless Steel. Stainless Steel Lower Rear Panel. Finished Painted Hammertone Gray Exterior Ends. Removable 6" High Legs with NSF adjustable Bullet Feet Flanged at Front.

Make Up Air: Make Up Air introduced through Grills on front of Top.Front is insulated. Full Length PreCut Make Up Air Collar

NFPA 3" Air Space: 20 Gauge S/S Rear Air Space to allow Updraft to be installed 3" from drywall on steel studs only. Also available on left and right ends.

☐ **Aluminized Steel Model:** Same as above only Interior Ends and Lower Rear Panel Aluminumized Steel.

☐ **Maple Cutting Board:** Laminated Hard Maple, 8" wide, mounted on Stainless Steel brackets. Board easily removable for cleaning.

☐ **Stainless Steel Exterior Ends:** supplied with Stainless Steel Exterior Base Ends.