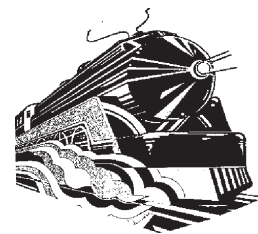




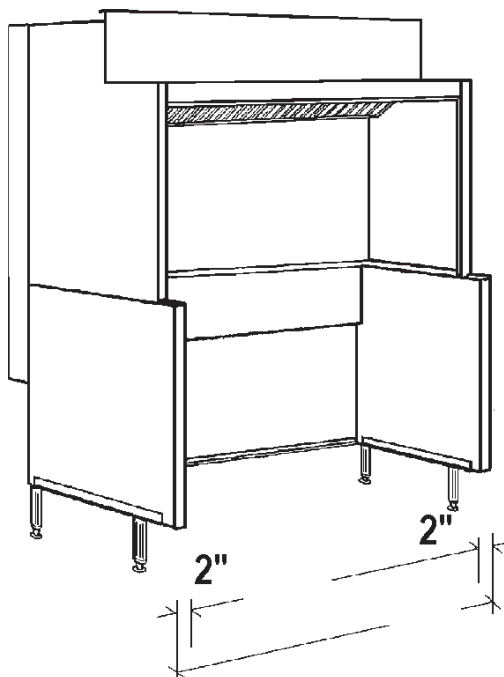
CANOPIES, UPDRAFTS, DUCTWORK, EXHAUST AND MAKE UP AIR FANS

APPROVAL SHEET



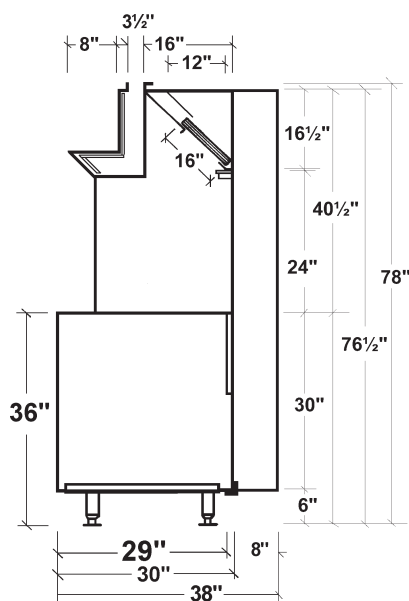
Economy Plate Shelf Open Updraft

Front & Rear Untempered Make Up Air



| | | |
|---|-----------|-------|
| Job Name: | | |
| Dealer: | | |
| Updraft Model | By: | Date: |
| Fabrication cannot begin until sheet is signed | | |
| Approved by | PO Number | Date |

Options



Specifications

- **Updraft Superstructure:** Constructed of Stainless Steel on all exposed surfaces.
- Ventilation Section constructed of 20 Gauge Stainless Steel and 18 Gauge Aluminized Steel. All Seams externally welded, Code #96 construction. Heavy Gauge Stainless Steel Plate Shelf, Back Panel and Top Ends. Includes a full complement of 16" High x 20" wide U.L. Listed Aluminum Baffle Filters, pitched Grease Gutter, Grease Drain, and removable S/S Covered Grease cup. NSF Listed. Built to NFPA Standard #96, Michigan & International Mechanical Code Type I Specifications for Low Side Wall Canopies.
- **Updraft Equipment Base:** Double Wall Ends for easy cleaning. Interior Ends constructed of Stainless Steel. Stainless Steel Lower Rear Panel. Finished Painted Hammertone Gray Exterior Ends. Removable 6" High Legs with NSF adjustable Bullet Feet Front Flanged at Front.
- **Make Up Air:** Make Up Air introduced in two places, under the plate shelf thru grills, (plate shelf is insulated) and in rear of Updraft in a insulated distribution plenum. Full Length Front Make Up Air Collar
- **NFPA 3" Air Space:** 20 Gauge S/S Rear Air Space to allow Updraft to be installed 3" from drywall on steel studs only. Also available on left and right ends
- ☐ **Aluminized Steel Model:** constructed the same as above, only with aluminized Interior Base Ends, and aluminized lower rear panel
- ☐ **Maple Cutting Board:** Laminated Hard Maple, 8" wide, mounted on Stainless Steel brackets. Board easily removable for cleaning.
- ☐ **Stainless Steel Ends:** supplied with S/S Left/Rite Exterior Base Ends.