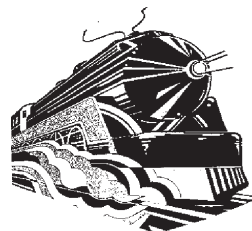


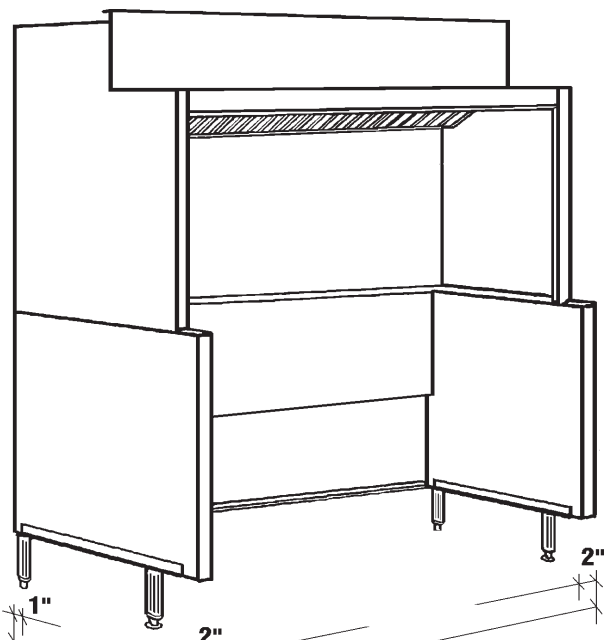


CANOPIES, UPDRAFTS, DUCTWORK, EXHAUST AND MAKE UP AIR FANS

APPROVAL SHEET



Coney Island 12" Plate Shelf Open Updraft



Job Name:

Dealer:

Updraft Model

By:

Date:

Fabrication cannot begin until sheet is signed

Approved by

PO Number

Date



Standard 2

Options



Specifications

Updraft Superstructure: Constructed of Stainless Steel on all exposed surfaces. Ventilation Section constructed of 18 Gauge Stainless Steel and 18 Gauge Aluminized Steel. All Seams externally welded, Code #96 construction. 12" Wide Heavy Gauge Stainless Steel Plate Shelf, Back Panel and Top Ends. Includes a full complement of 16" High x 20" wide U.L. Listed Aluminum Baffle Filter, pitched Grease Gutter, Grease Drain, and removable S/S Covered Grease cup. NSF Listed. Built to NFPA Standard #96, and International Mechanical Code Specifications for Type I Low Side Wall Canopies.

Updraft Equipment Base: Double Wall Ends for easy cleaning. Interior Ends constructed of Stainless Steel. Stainless Steel Lower Rear Panel. Finished Painted Hammertone Gray Exterior Ends. Removable 6" High Legs with NSF adjustable Bullet Feet, Flanged at Front. NSF Listed.

Maple Cutting Board: Laminated Hard Maple, 8" wide, mounted on Stainless Steel brackets. Board easily removable for cleaning.

Stainless Steel Exterior Ends: supplied with Stainless Steel Exterior Base Ends.