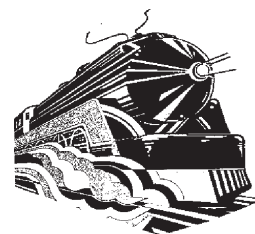




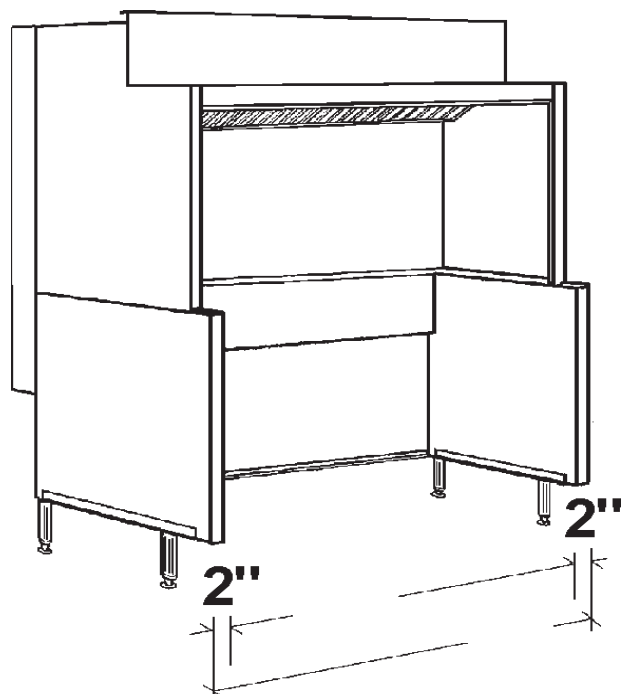
CANOPIES, UPDRAFTS, DUCTWORK, EXHAUST AND MAKE UP AIR FANS

APPROVAL SHEET



Coney Island Plate Shelf Open Updraft

Rear Untempered Make Up Air

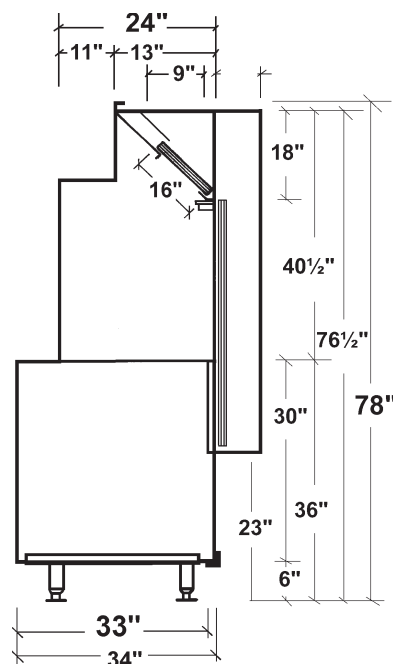


Job Name:		
Dealer:		
Updraft Model	By:	Date:
Fabrication cannot begin until sheet is signed		
Approved by	PO Number	Date



Standard 2

Options



Specifications

- Updraft Superstructure:** Constructed of Stainless Steel on all exposed surfaces. Ventilation Section constructed of 18 Gauge Stainless Steel and 18 Gauge Aluminized Steel. All Seams externally welded, Code #96 construction. 16 Gauge Stainless Steel Plate Shelf, Back Panel and Top Ends. Includes a full complement of 16" High x 20" wide U.L. Listed Aluminum Baffle Filters, pitched Grease Gutter, Grease Drain, and removable S/S Covered Grease cup. NSF Listed. Built to NFPA, Michigan, IMC, Uniform, and Standard Mechanical Code Specifications for Type I Low Side Wall Canopies.
- Updraft Equipment Base:** Double Wall Ends for easy cleaning. Interior Ends constructed of Stainless Steel. Stainless Steel Lower Rear Panel. Finished Painted Hammertone Gray Exterior Ends. Removable 6" High Legs with NSF Flanged adjustable Bullet Feet. NSF Listed.
- Make Up Air:** Untempered Make Up Air introduced behind Updraft in insulated Stainless Steel where shows air distribution plenum.
- Maple Cutting Board:** Laminated Hard Maple, 8" wide, mounted on Stainless Steel brackets. Board easily removable for cleaning.
- Stainless Steel Exterior Ends:** supplied with Stainless Steel Exterior Base Ends.
- UL Listed and labeled construction**

